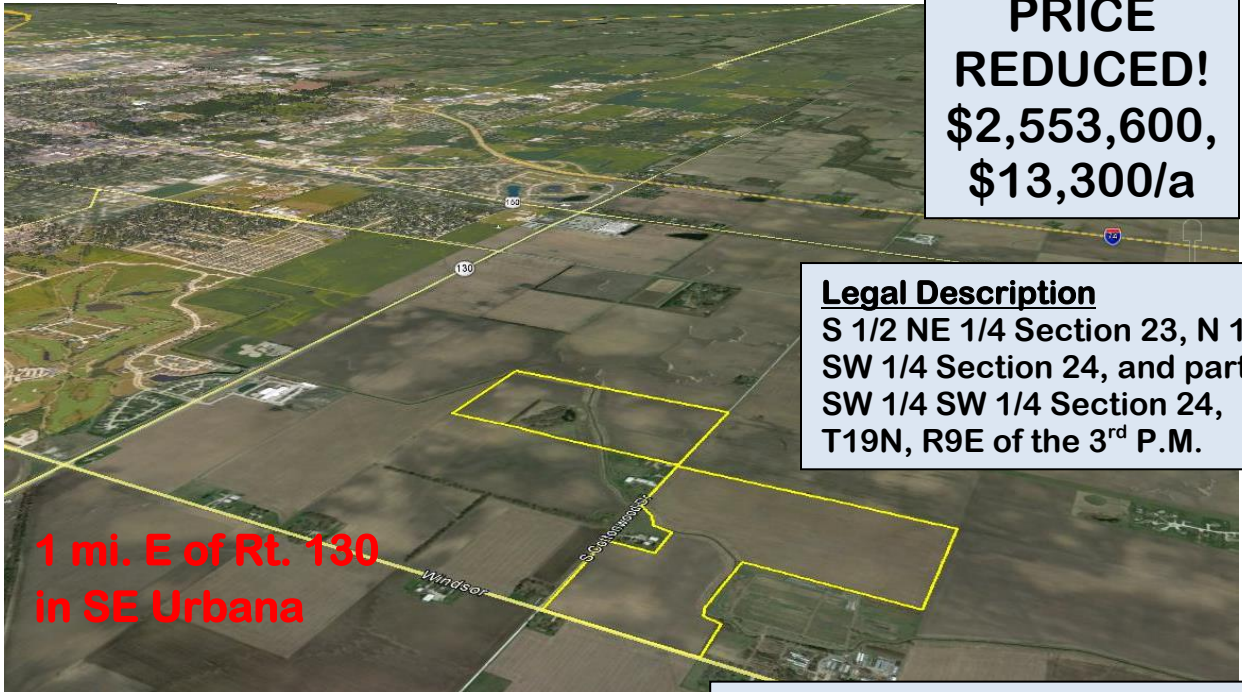


Farm For Sale: Green Family Farm

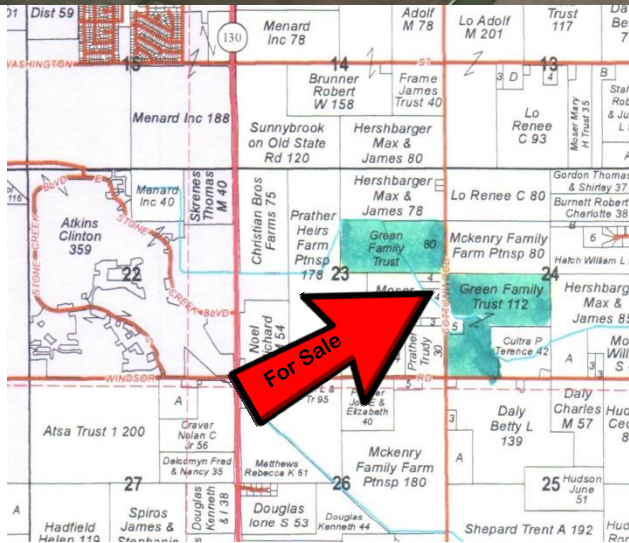
192 Acres, Urbana Township Champaign County



**PRICE
REDUCED!**
\$2,553,600,
\$13,300/a

Legal Description
 S 1/2 NE 1/4 Section 23, N 1/2
 SW 1/4 Section 24, and part of
 SW 1/4 SW 1/4 Section 24,
 T19N, R9E of the 3rd P.M.

**1 mi. E of Rt. 130
in SE Urbana**



Possession: Full possession upon closing.
Terms: 10% down upon acceptance of offer by seller. Balance due in 30 days.
Agency: Camp Farm Management, Inc. is an Illinois Licensed Real Estate Broker acting solely as the seller's agent, and will not act as agent for buyer in this transaction.



Real Estate Taxes			
PIN	Acres	Assessed	2014 paid in 2015
30-21-24-300-001	111.9	\$54,980	\$4,598.76
30-21-23-200-002	80	\$28,580	\$2,468.36

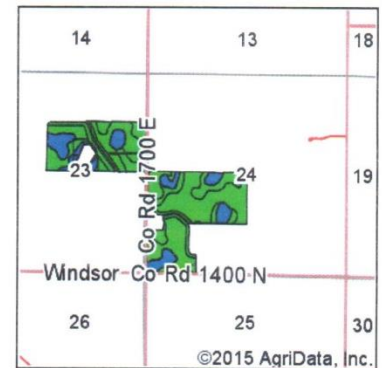
Contact:
 Jan Meyer
 Camp Farm Management, Inc.
 P. O. Box 707
 Champaign, IL 61824-0707
 Phone: 217-356-1321
 Cell: 217-841-0128
 Fax: 217-356-8261
 Email: Jan@campfarm.com
www.campfarm.com

For more information and additional pictures, visit us at www.campfarm.com



USDA/FSA Information			
Farm #3471			
		Acres	Yield
Corn	ARC-CO	91.43	162
Soybean	ARC-CO	69.37	53
CRP		19.4	

	Yield History	
	Corn	Soybeans
2013	211	61
2014	241	65
2015	216	72.6



State: Illinois
County: Champaign
Location: 24-19N-9E
Township: Urbana
Acres: 184.21
Date: 9/21/2015

Camp Farm Management, Inc.

Maps Provided By:
surety
CUSTOMIZED ONLINE MAPPING
© AgriData, Inc. 2015 www.AgriDataInc.com

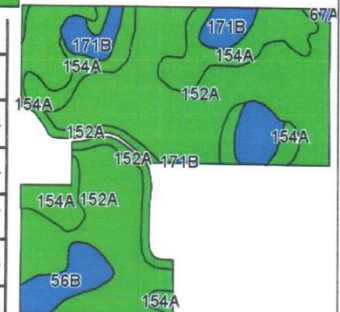


Soil Fertility	
pH	6.0
P	56
K	346



Area Symbol: IL019, Soil Area Version: 9

Code	Soil Description	Acres	Percent of field	Il. State Productivity Index Legend	Corn Bu/A	Soybeans Bu/A	Crop productivity index for optimum management
152A	Drummer silty clay loam, 0 to 2 percent slopes	114.25	62.0%		195	63	144
154A	Flanagan silt loam, 0 to 2 percent slopes	32.70	17.8%		194	63	144
**171B	Catlin silt loam, 2 to 5 percent slopes	20.62	11.2%		**185	**58	**137
**663B	Clare silt loam, 2 to 5 percent slopes	7.63	4.1%		**180	**56	**133
**56B	Dana silt loam, 2 to 5 percent slopes	5.84	3.2%		**178	**55	**130
198A	Elburn silt loam, 0 to 2 percent slopes	2.25	1.2%		197	61	143
865	Pits, gravel	0.70	0.4%				
67A	Harpster silty clay loam, 0 to 2 percent slopes	0.22	0.1%		182	57	133
Weighted Average					191.8	61.6	141.7



Disclaimer: Information contained in this brochure is considered to be accurate and reliable; now warranties or guarantees are being made. This offer may be withdrawn from the market or subject to change in price or terms without advance notice. Seller reserves the right to reject any and all offers.